



Answers to questions posted on Wiki

Q1: Coding of stretches with specific risks

- In July 21 was posted on Wiki the lists and codes for data exchange with ECDB and their integration into the ERDMS
- Implementation issues with stretches with specific risks (need for flexibility and easy approach when many stretches) → modification of coding
- From combination of an inland waterway code (3 letters) and of a 3-digits serial number to combination of an inland waterway code (3 letters), **the starting river km point (4 digits number) and the ending river km point of the stretch (4 digits number), separately by a single dash “-”**.

List	ERDMS encoding required	Title of table in the ERDMS	Lists, codes or coding method as relevant	Comments
4. Stretches of inland waterways with specific risks	YES Regulation (EU) 2020/182 (Annex I)	LIST-STRETCH	<p>Combination of an inland waterway code (3 letters), the starting river km point (4 digits number) and the ending river km point of the stretch (4 digits number), separately by a single dash “-”. Example: RH-0498-0592 for the Rhine, or D--2249-2322 for the Danube.</p> <p><u>The list of inland waterway codes will be established by the Commission. It will use the codes for inland waterways listed in Section 2A of Implementing Regulation 2018/1973 when three digits and complement the two or one digits codes with respectively “-” or “--”.</u></p> <p><u>The km points of the notified stretches of inland waterways will also be attributed by the Commission on the basis of the information communicated by the Member States.</u></p>	<p>These codes <u>will NOT be used</u> in the serial number for specific <u>authorisations</u> but on the certificates and in the registers/ECDB to designate the stretches of inland waterway with specific risks for which specific <u>authorisations</u> have been granted.</p> <p><u>Authorisation</u> can be granted for sub-section of these notified stretches of inland waterways eg RH-0500-0530. In that case, the sub-section will have to be <u>entered manually</u> in the registers (free text field) as not available as such in the list of notified stretches of specific risks. The same methodology should however be followed to encode the stretch.</p>

Q2: Fitness restrictions 07., 08., 09.

Will the free text be part of the element MitigationMeasureEnum?

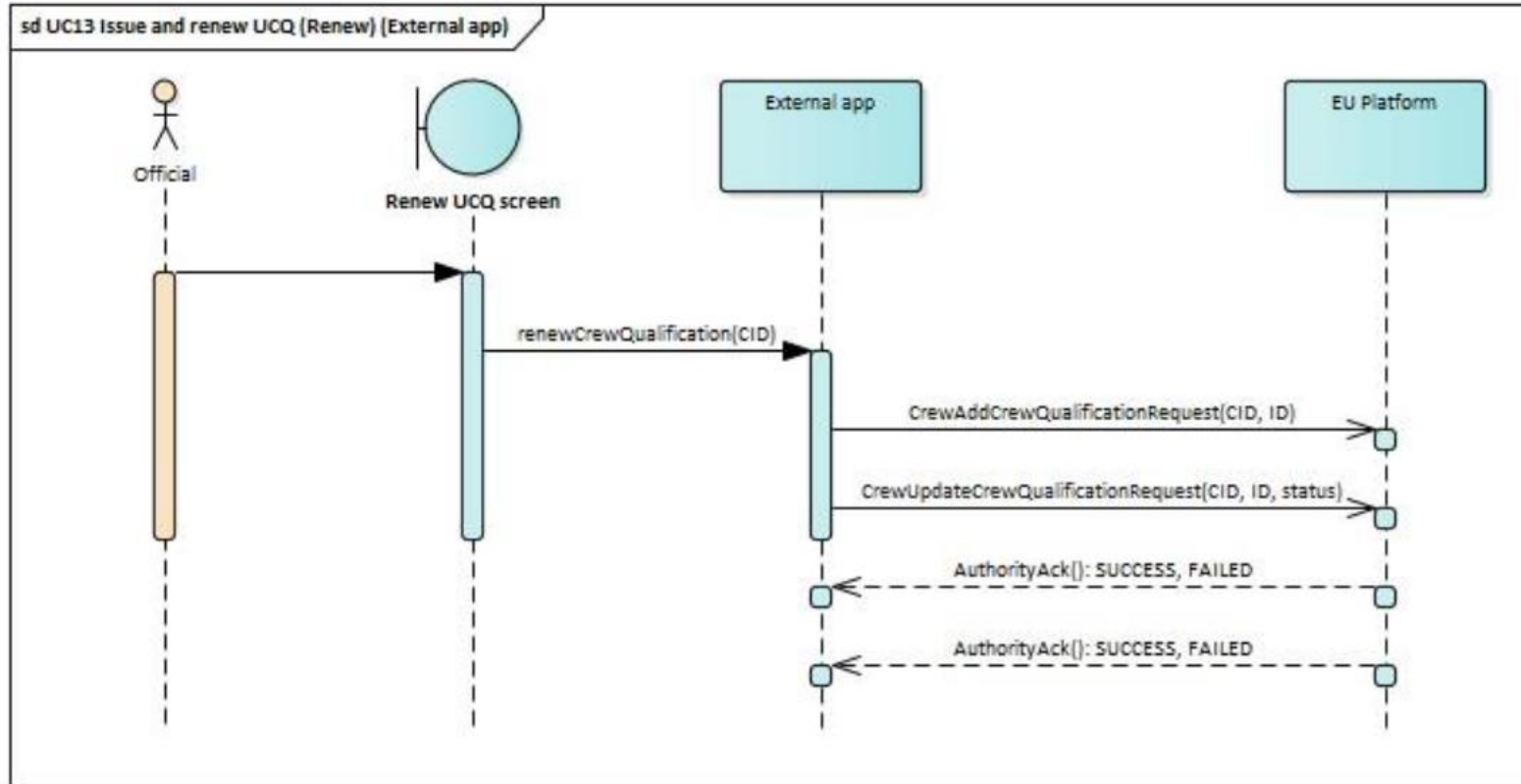
- 07 Limited to one craft, named
08 Limited area, namely
09 Limited task, namely
- Experts in CESNI/QP decided on 16/09 to take the following approach (will be formally confirmed by CESNI as FAQ):
- the two-digit codes shall be entered, directly followed by the free text without repeating the description of the limitation as provided for by code 07 to 09.
- In terms of free text following entry 07, the ENI shall be indicated. If no ENI is available, the vessel name shall be entered. eg. "07 12345678"
- In terms of free text following entries 08 and 09, the name of the vessel area and the name of the task shall be entered in the language in which the certificate is issued. The competent authority may decide to repeat the area/task in a foreign language that is widely understood in Europe (English or German). Eg 08. pont/deck

Q3: Time out when calling national registers

- Duration of time out when a MS is called has currently been set to 5 minutes. We think it could be decreased to 1 minute. Do you agree?

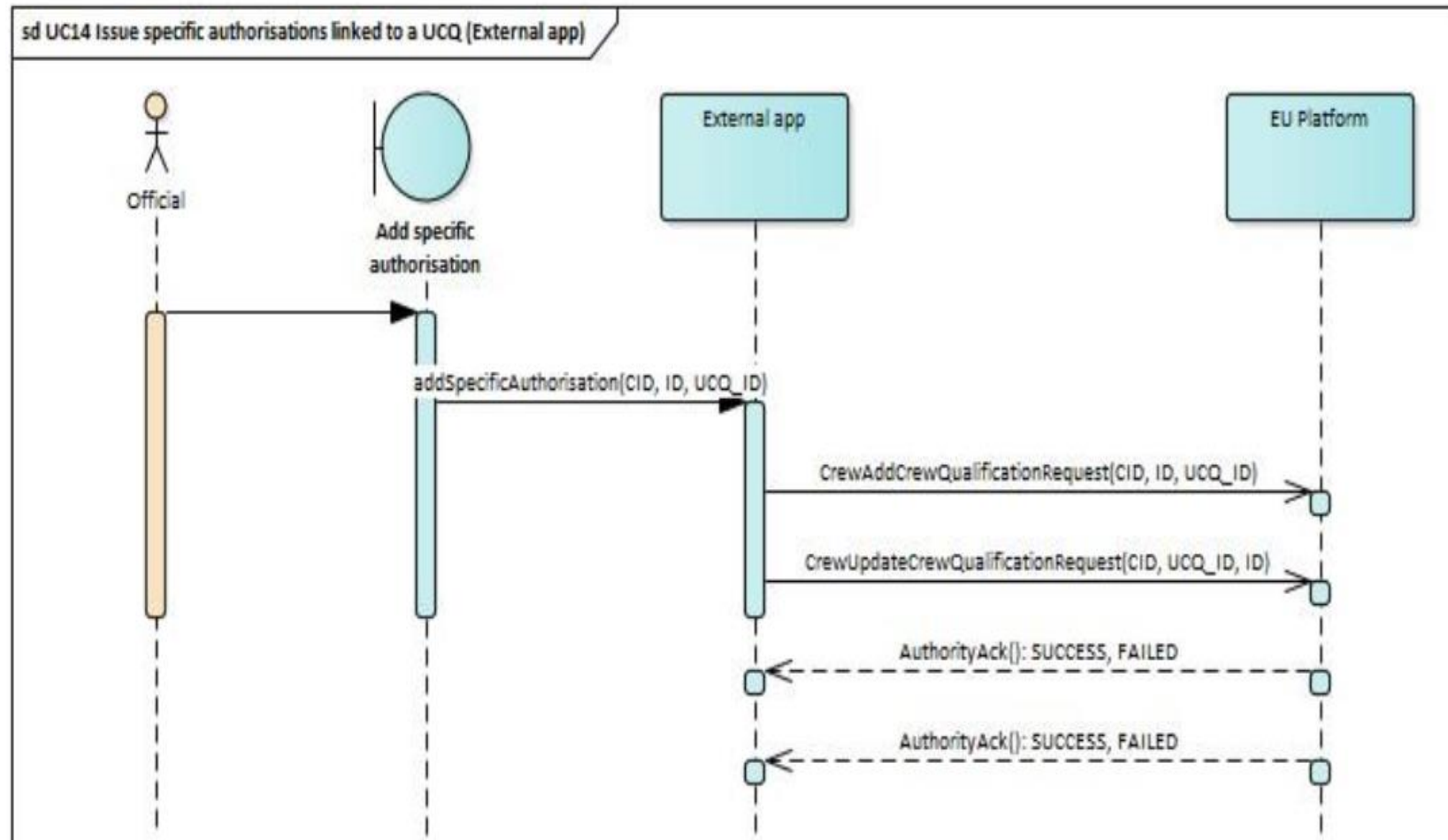
Q4: Renew qualification

10.3.2. *Renew qualification*



Q5: Issue specific authorization by authority other than BM certificate

Based on: 1 - UC04 Issue specific authorisations linked to a UCQ issued by another competent authority



Q6: What is the onboarding process

- In order to start the onboarding process, you will have to:
 - Send an e-mail to the ECDB support team MOVE-ECDB@ec.europa.eu asking for access to the ECDB Wiki page (if you do not have it already)
 - If you already have an access point, the onboarding/ connection process will be started with the [onboarding document](#) that needs to be filled in and sent to the above mentioned ECDB support team.

Q7: What do I need to connect to ECDB Acceptance?

- In order to connect to ECDB Acceptance environment you will need to have:
 - A valid EU login account
 - Your country to be added to the organization list in ECDB and connected to it.

Q8: What is eDelivery and AS4 protocol? And how do I connect to it?

- eDelivery - The connection between the Union database and the national registers shall be based on the Commission's secure electronic registered delivery service (CEF eDelivery)
- AS4 Protocol - The AS4 (Applicability Statement) profile of the ebMS 3.0 specification has been developed in order to bring continuity to the principles and simplicity that made AS2 successful, while adding better compliance to Web Services standards, and features such as message pulling capability and a built-in Receipt. An AS4 AP is referred to as an Access Point. An Access Point can send messages to other Access Points, and receive messages from other Access Points. In a PMode file an Access Point is identified as a party.
- In order to complete the connection process, please follow the steps in the request to join page on the Wiki:
- <https://webgate.ec.europa.eu/fpfis/wikis/display/INLNAV/Request+to+join>

Q9: What can I test in ECDB Acceptance?

At the moment the ECDB Acceptance environment contains all the features developed in 8 sprints and presented in the presentation today. The 9th sprint is ongoing.

Q9: What can I test in ECDB Acceptance?

Sprint1

- **User Management**
 - Adding new Role
 - Display user role
 - User Invitation send and accept
 - Landing page for different roles
 - Manage Organisation
- **User Interface**
 - Header & Footer
- **Technical**
 - Mock Domibus
 - Setup ACC environment.
- **Exchange Model**
 - v1.0.4

Sprint 2

- **User Management**
 - Change user role
 - Delete user
- **Search Crew**
 - Search Crew Member with CID
 - Search CREW Member details
- **Technical**
 - ECDB to ERDMS2 link setup

Sprint 3

- **User Management**
 - EC Official can Delete user & Organisation
 - S2S users list display
- **User Interface**
 - 2D Barcode
- **Search Crew**
 - Cancel Search
 - Advanced Search
 - Create Crew Member
- **Technical**
 - Setup PROD environment.

Sprint 4

- **Qualification**
 - Search Crew member from its own authority
 - Edit Crew Member personal data
 - Display Qualifications of Crew Member
 - Add Qualification
- **Technical**
 - Retrieve country list from ERDMS2
 - Retrieve Qualification types and status from ERDMS2
- **Exchange Model**
 - v1.0.5

Sprint 5

- **Qualification**
 - Edit Qualification
 - Suspend Qualification
 - Renew Qualification
 - Display Fitness of Crew member
 - Add Fitness data to a qualification
- **Technical**
 - Retrieve specific authorization from ERDMS2
- **Exchange Model**
 - v1.0.6
 - v1.0.7

Q9: What can I test in ECDB Acceptance?

Sprint 6

- **ERDMS Conection**
 - Integration of 7 tables of ERDMS into ECDB
- **User Management**
 - Manage Organisation creation
- **Qualification**
 - Withdraw Qualification
- **User Interface**
 - CID search from 2D Barcode
- **Exchange Model**
 - v1.0.8
 - v1.0.9

Sprint 7

- **Qualification**
 - Add Single Restriction
 - With Qualification Tracking
 - Create Specific Authorisation
 - Suspend Specific Authorisation
 - Withdraw Specific Authorisation
 - Navigate from Advanced Search to CID Search
- **Exchange Model**
 - v1.1.0
 - v1.1.1

Sprint 8

- **Qualification**
 - Refresh Qualification view on any action to Qualification
 - Add Multiple Restrictions
 - View Service Record Book
 - Add Service Record Book
 - Edit Service Record Book
- **User Interface**
 - S2S User display update
- **External App**
 - Search with CID
 - Advance Search

Sprint 9

- **Qualification**
 - Export QC in PDF Implementation
- **Search Crew**
 - Showing 2 views for Search Results
 - Search Request Retainment
 - Transliteration POC
- **External App**
 - Add qualification
 - Renew qualification
 - Update qualification (fitness data)
- **Exchange Model**
 - v1.1.2

Q10: Translation and transliteration

- Transliteration: POC - proof of concept for transliteration is ongoing (converting non-latin characters to latin characters).
- Translation: The translation of the application will be completed in the future.

Thank you



© European Union 2020

Unless otherwise noted the reuse of this presentation is authorised under the [CC BY 4.0](https://creativecommons.org/licenses/by/4.0/) license. For any use or reproduction of elements that are not owned by the EU, permission may need to be sought directly from the respective right holders.

Slide xx: element concerned, source: e.g. Fotolia.com; Slide xx: element concerned, source: e.g. iStock.com

