





Face-to-face meeting

Tracking ships – IWW implementation

Mark van der Spoel

Outline

- Previous project
- Current process
- Steps
- Final result

Why did we do AIS research in the first place?



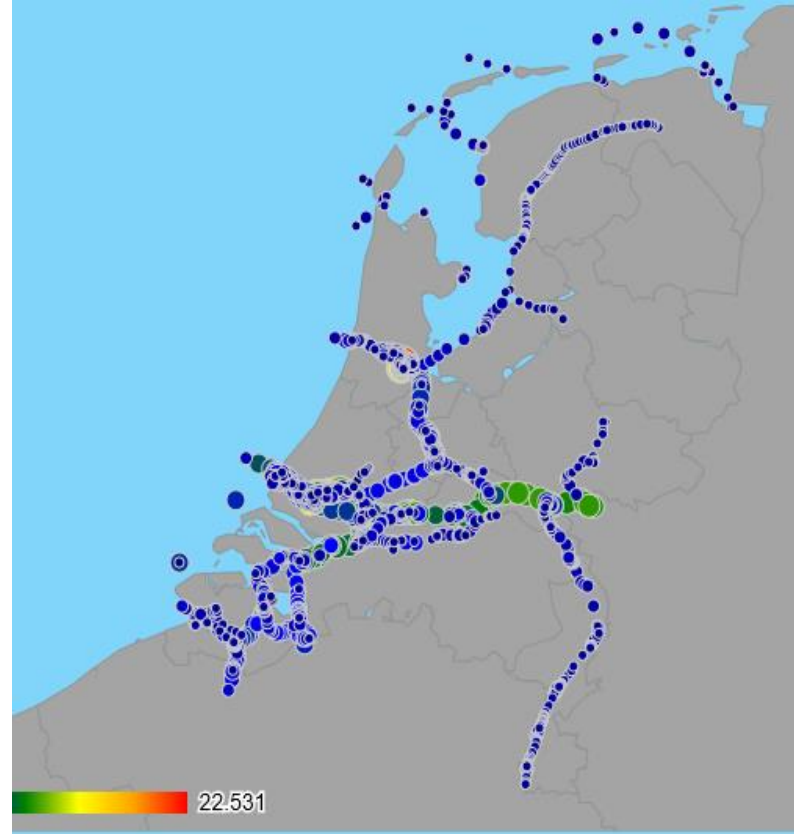
Previous project

1 Month data

Data on goods carried

Data with traffic intensities

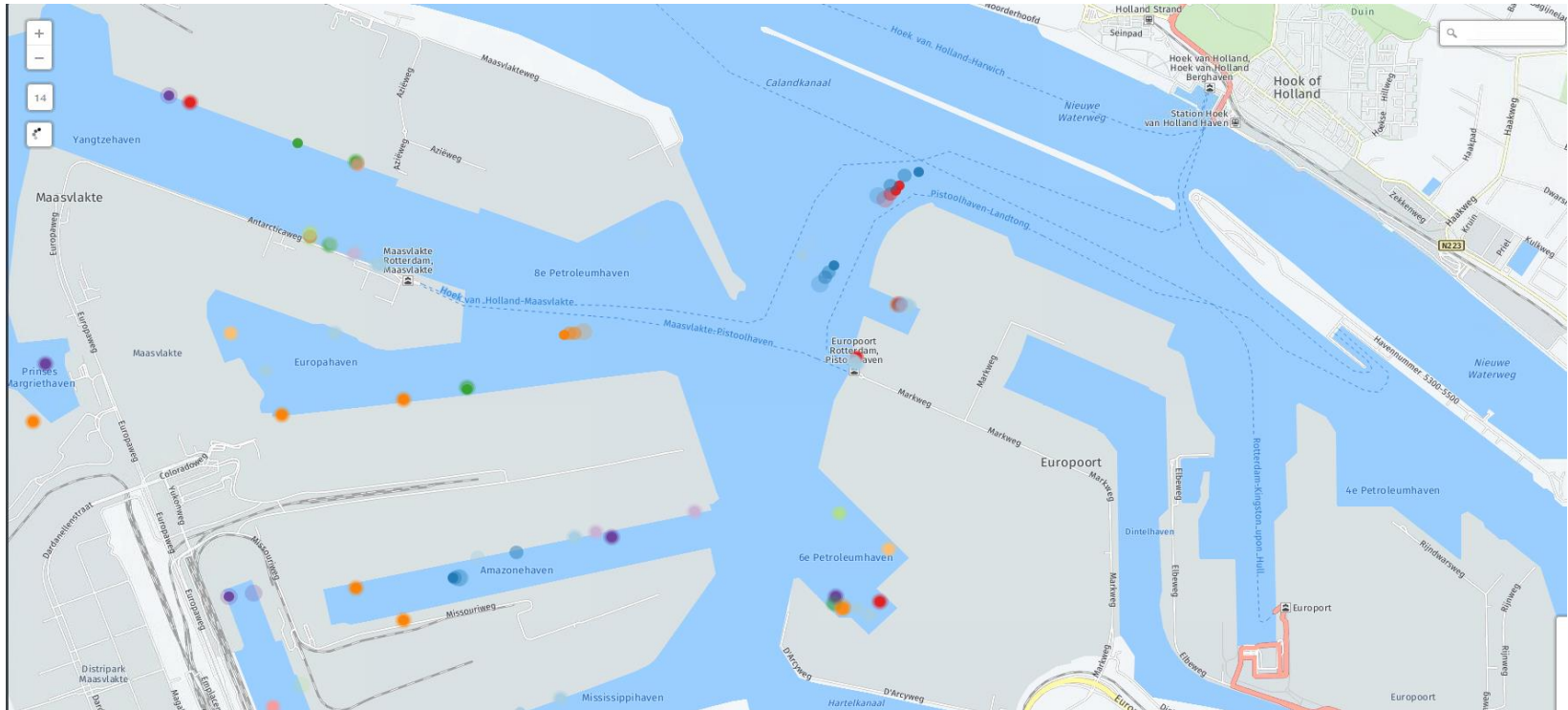
Together with RWS



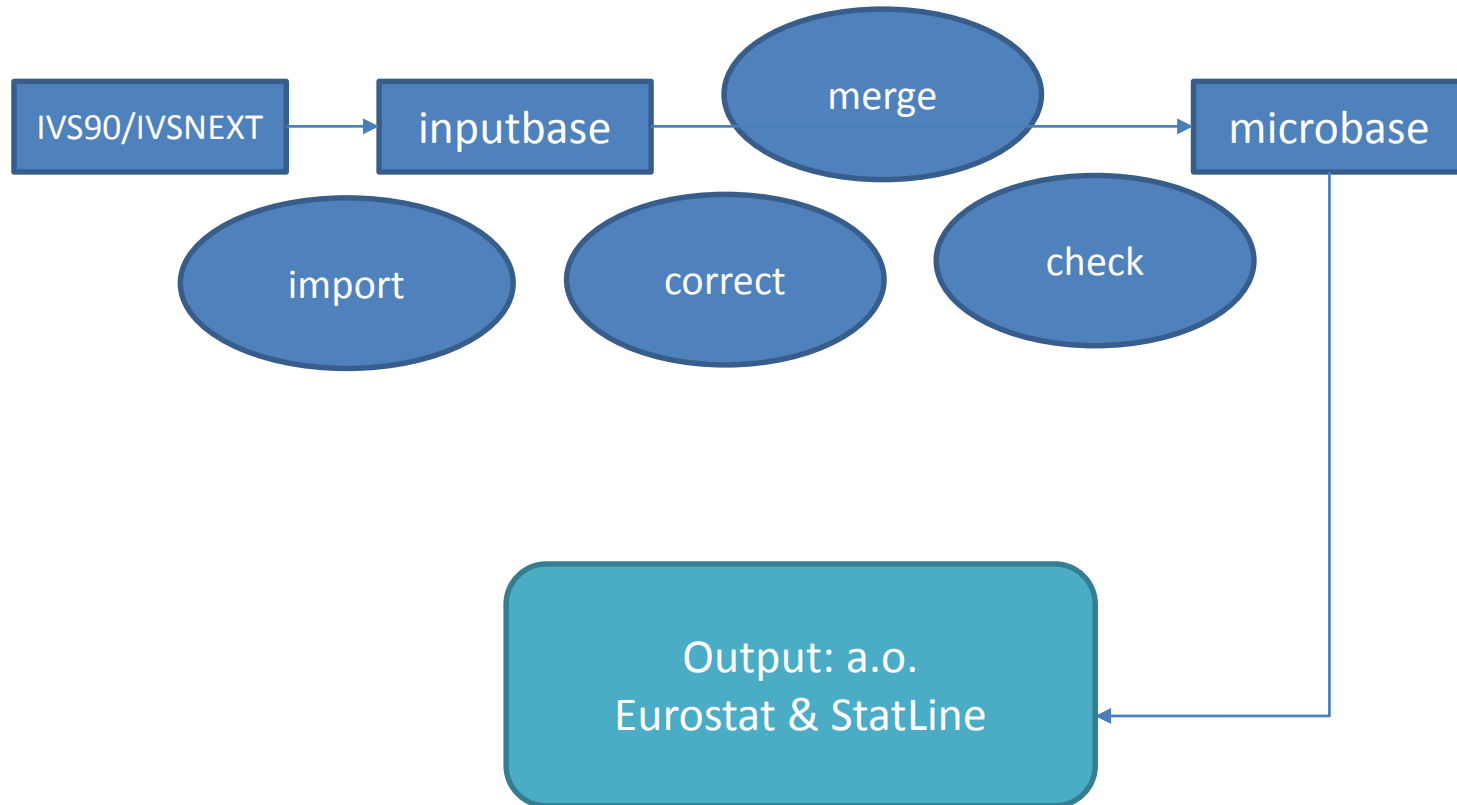
Main conclusions

Not all ships covered in our IWW statistics

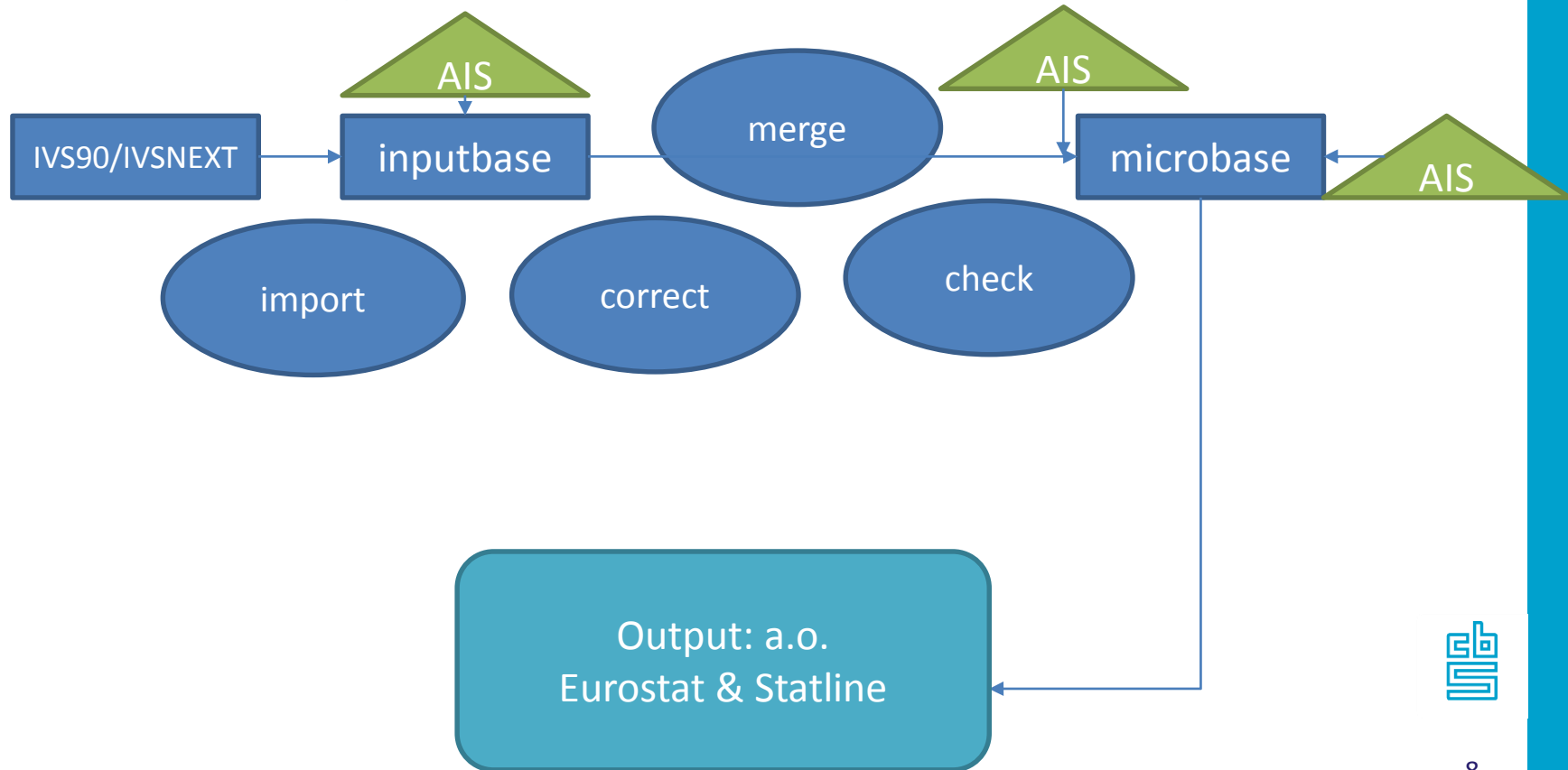
Geological data insufficient



Current process



Where to implement AIS?



Steps to take

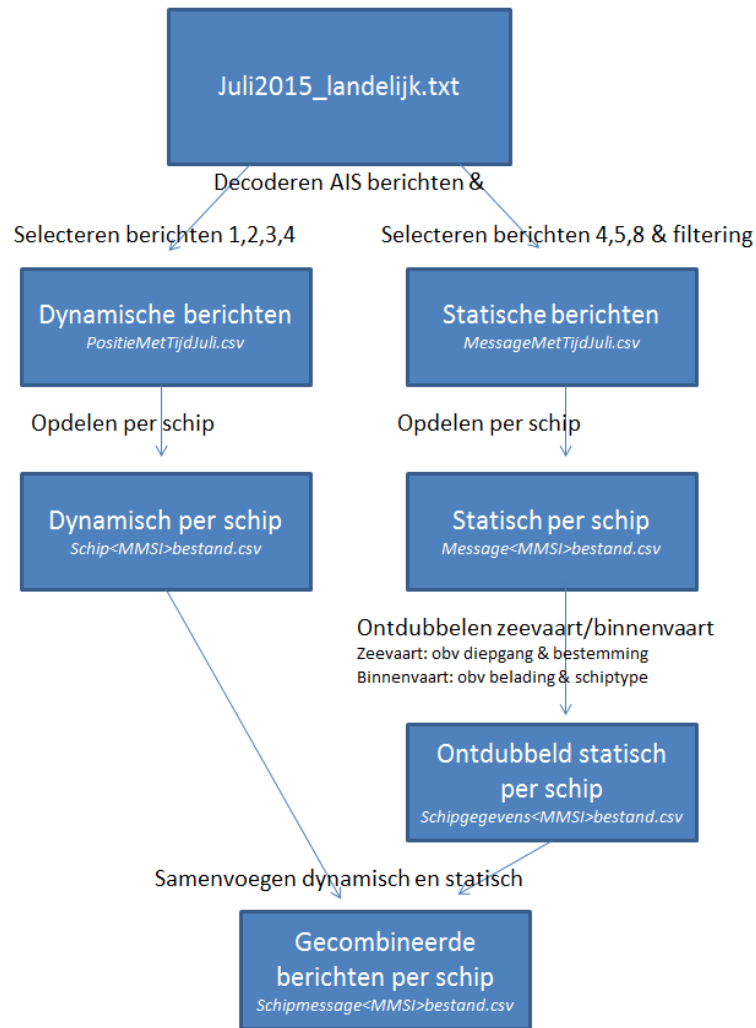
1. Validate methods
2. Improve methods (if possible)
3. Determine location of implementation

-> Hardware capacity



Questions?





Comparison AIS-IVS90

