



FARNET Support Unit 2014-2020

FARNET Support Unit
Gilles van de Walle

MA/NN meeting
15/16 March 2016 Brussels

► FARNET : Fisheries areas network

- Community of people implementing CLLD (FLAGS, MA's, NN's, project promoters, DG MARE, FSU,...)

► FSU: FARNET Support Unit

- Central team
- Geographic experts
- Supporting the network and assisting DG MARE in implementing CLLD in fisheries and coastal areas.

Monica Burch
Veronesi (DTL)

Charlotte Gobin

**Thematic & Territorial
Coordinators**

**Thematic & Territorial
Coordinators**

Urszula
Budzich Tabor

John Grieve

Gilles van de Walle, Florence Gérard

Lorena van de
Kolk

Margot Van
Soetendael

**Thematic &
Territorial
Officers**

**Team L.
Contract M.+Deputy
Team Assistant**

**Thematic &
Territorial
Officers**

Serge Gomes
da Silva

Sabine Kariger, Marie Solot

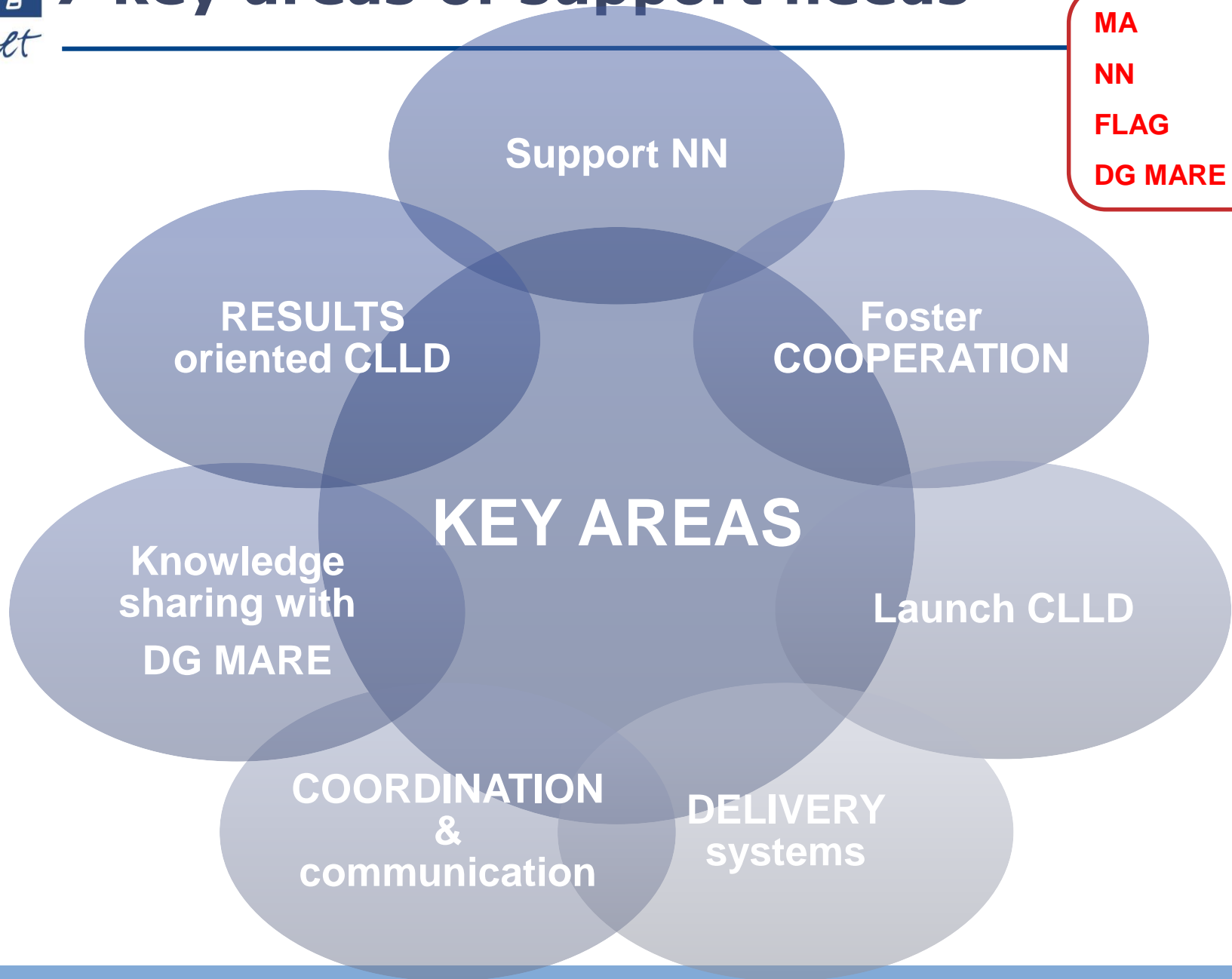
Events/ Communication
Journalists; graphic design; website; event: Com. Coordinator

Geographical Experts + ad hoc Thematic Expertise

	MS	S. Gomes da Silva	M. Burch	C. Gobin	L. van de Kolk	U. Budzich-Tabor	J. Grieve	M. Van Soetenda el	Geographical experts
1	BG						√		Tanya Shoumkova
2	CY		√						Afroditi Mantzinou
3	DE			√					Dirk Schubert
4	DK							√	Hans Jorgen Jensen
5	EE				√				Ahto Oja
6	ES		√						Rosa Chapela
7	FI			√					Petri Rinne
8	FR			√					Thomas Binet
9	GR		√						Afroditi Mantzinou
10	HR						√		Visnja Jelic-Mueck
11	IE						√		Susan Grieve
12	IT							√	Carlo Ricci
13	LT				√				Simona Uta raite
14	LV				√				Valdis Kudins
15	PL					√			Ireneusz Kaminski
16	PT	√							Miguel Gaspar
17	RO						√		Simona Pascariu
18	SE	√							Stig Hansson
19	SI					√			Marco Koscak
20	UK						√		Susan Grieve

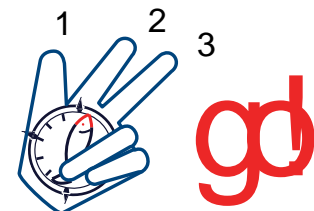
7 key areas of support needs

- MA
- NN
- FLAG
- DG MARE



► **Speeding up and improving the set-up of delivery systems**

Including improving delivery procedures, support to national networks...



► **Fostering results oriented CLLD**

Support to strategy development, monitoring and evaluation, reflection at a wider level on FARNET actions beyond 2020...



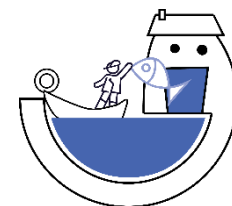
► **Laying the ground for further cooperation**

Rules and procedures for cooperation, foster cooperation projects, information on cooperation practices...

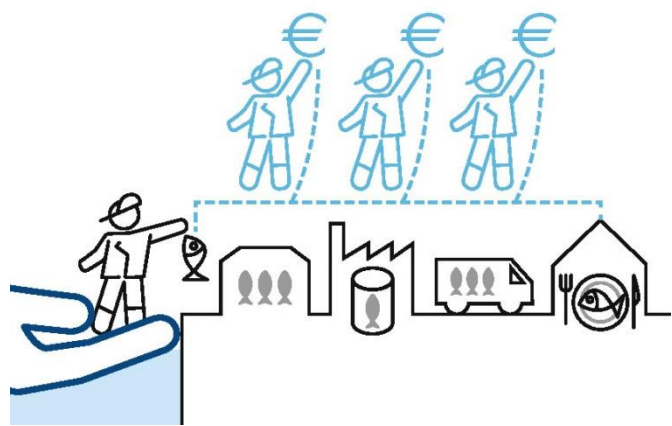


► **Developing local supply chains**

Add value to local products, promote innovation, biotechnology,...



- ▶ **2 transnational seminars for FLAGS (and related technical guides)**
 - Result oriented CLLD
 - ▶ Helsinki, 24-26 May
 - Improving strategies (targets and indicators)
 - Monitoring and evaluation
 - CLLD broader impact
 - ▶ Collaboration with the FAME SU



- Developing local supply chains
 - ▶ November 2016
 - Business support schemes
 - Chain linkages
 - Collective actions
 - Innovative supply chains

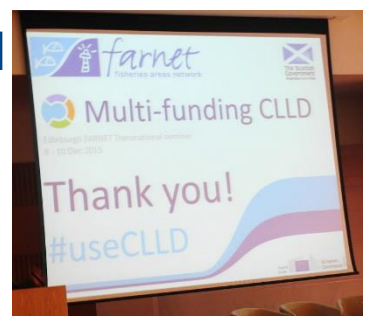
▶ **2 MA/NN meetings**

- Delivery systems/ National network set up/ Monitoring and evaluation/Cooperation procedures

▶ **Tailor made support and capacity building**

- 5 priority countries (ES/HR/IT/PL/RO)
- Capacity building workshops in MS + bilateral support

▶ **Expert reports on CLLD results and monitoring and evaluation (collaboration with FAME)**



► **Updated website**

www.farnet.eu

► **Publications**

- Good practices (method., thematic/ short, long)
- FARNET Flash
- 1 magazine
- Leaflet



► **Development of FLAG and country factsheets**

► **Cooperation landscape**

► **Joint LAG/FLAG database**



2016 – AWP 2 – Key milestones (indicative timing)												
	Q1			Q2			Q3			Q4		
	Jan	Feb	March	April	May	June	July	Aug	Sept	Oct	Nov	Dec
Key activities												
Seminars					Result CLLD						Supply chain	
MA/NN meetings			MA meeting 1							MA meeting 2		
Seminar Brochures			Multi funding CLLD						Result CLLD			
Support to cooperation												Coop landscape
Website								New website				
Magazine											Mag. 14	

Thank you!

FARNET Support Unit

38 rue de la Loi

1040 Bruxelles

+32 26 13 26 50

www.farnet.eu

The European Fisheries Areas Network

[Click to read & subscribe](#)

farnet

flash

follow us on

