



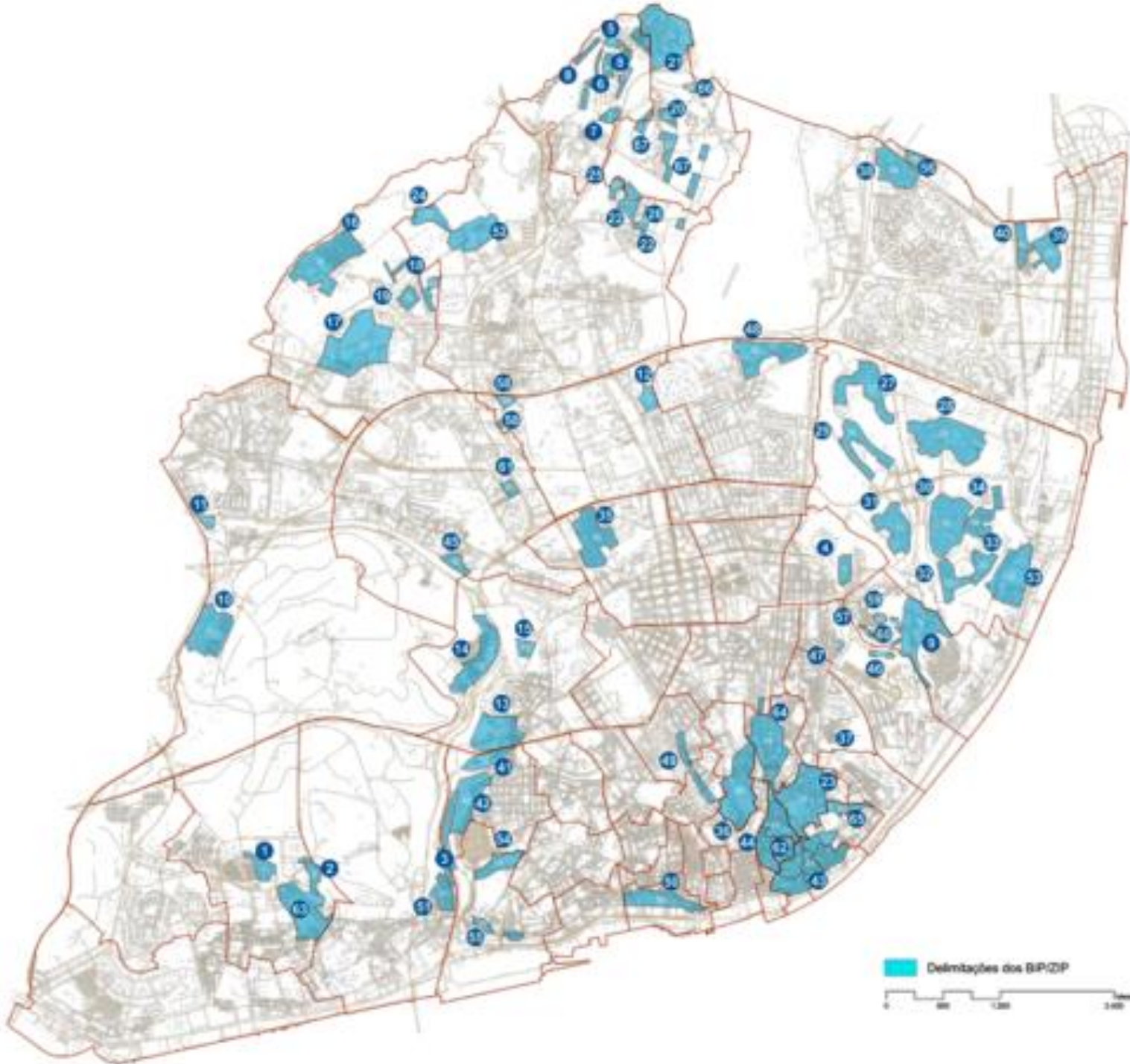






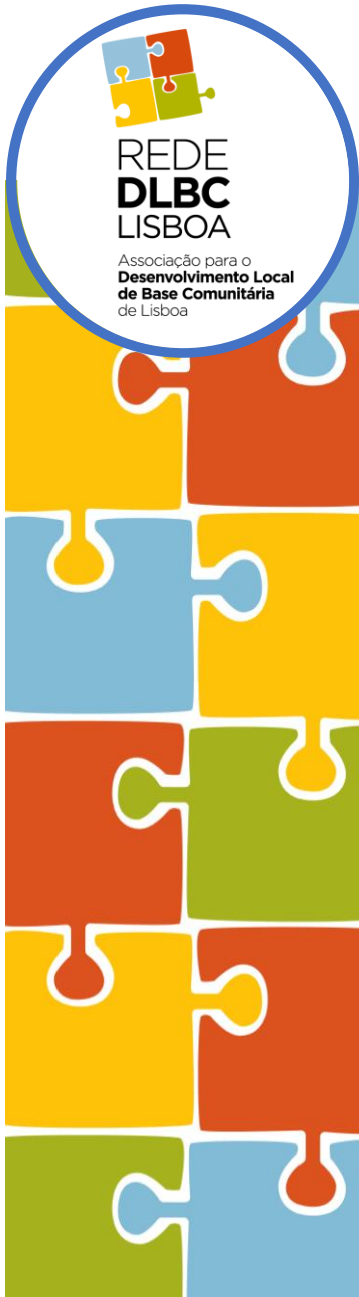


# LISBON SOCIO-TERRITORIAL FRACTURE



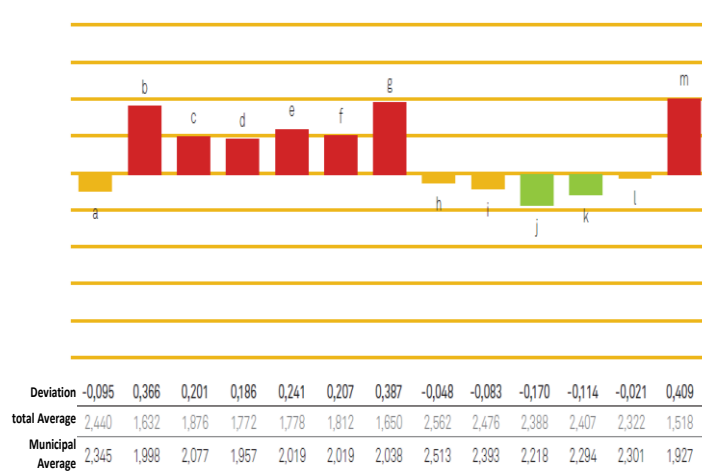
**67 "DEPRIVED NEIGHBOUHOODS"**

**>150/500K INHABITANTS**

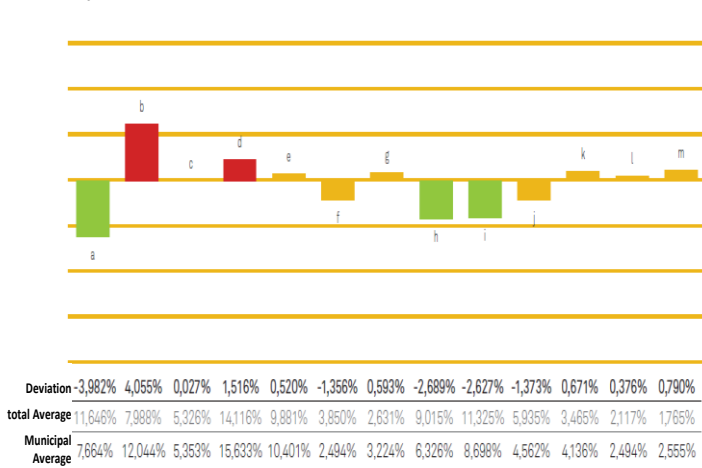


# Lisbon Community-led Local Development Network

Classification to: Importance of the proposed topics , a) to m)?  
(question 3)



Selection of: 3 topics that most concern the respondents , a) to m)?  
(question 4)



- a) Empty / Degraded homes
- b) Public Transport
- c) Facilities
- d) Security
- e) Urban Hygiene
- f) Green Areas
- g) Local businesses
- h) Unemployment
- i) Marginality
- j) Elderly Loneliness
- k) Youth lack of occupation
- l) School drop out / academic failure
- m) Conflicts with neighbours

Deviation = Municipal answers Index - Total enquiries Index

