



European Social Fund (ESF) and Community-Led Local Development (CLLD) against social exclusion in Kujawsko-Pomorskie POLAND



KUJAWSKO-POMORSKIE



NORTH CENTRAL POLAND

KUJAWSKO-POMORSKIE



Surface: 17 972 sq km

Population: 2 067 000



48 TOWNS AND CITIES



REGION ATTRACTIVE FOR TOURISTS

Mapa atrakcji turystycznych

kujawsko-pomorskie



NATURE



REGION RICH IN TRADITION



SZLAK PIASTOWSKI



UNIVERSITIES

WYŻSZA SZKOŁA
GOSPODARKI



WYŻSZA SZKOŁA BANKOWA
W TORUNIU

PAŃSTWOWA
WYŻSZA
SZKOŁA
ZAWODOWA
WE WŁOCŁAWKU



CENTRE FOR ASTRONOMY OF UMK



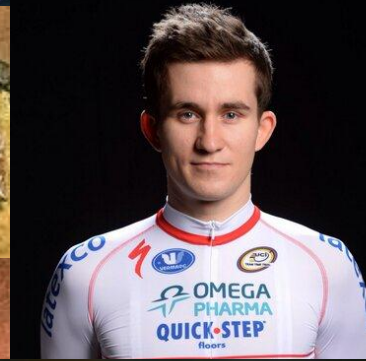
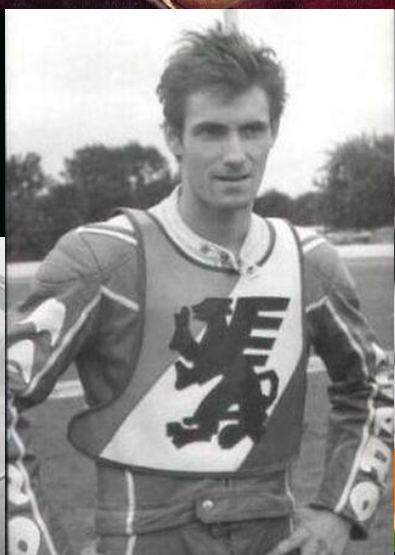
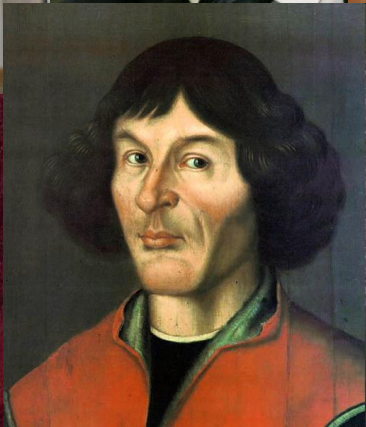
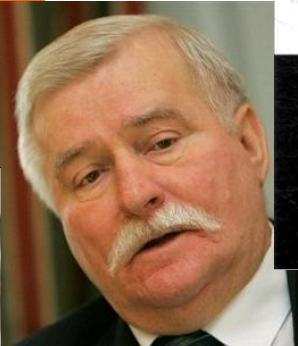
RADIO
TELESCOPE
– BIGGEST IN
EUROPE

HIGHEST
NUMBER OF
NEWLY
DISCOVERED
PLANETS

OPTICAL
OBSER-
VATIONS



OUTSTANDING CITIZENS



Unemployment rate



**12,8% - registered
unemployment rate – second
highest in Poland**



Poverty



9,5% - people living in extreme poverty (below minimum existence level) [7,4% - average rate for Poland]



Objective



What are we planning to achieve under CLLD (ESF)?



Objective



**Social and economical
activation of people affected
by or at risk of poverty and
social exclusion**





**11 155 – number of people
affected by or at risk of poverty
and social exclusion we are
planning to support**





**40% of them will start seeking
work**

4% will start working, BUT...





**Not all action are directly focused
on changing their status on the
labour market**





Basic rule:
**All actions must be conducted in
accordence with the Local
Development Strategy**





Implementing active integration solutions, such as:

- self-help (or mutual help) clubs and groups (eg. peer support, peer coaching)





- **Community centres**
- **Youth clubs**
- **Job clubs**
- **Vocational training, social competences**





Supporting of organization and animation of local communities (with help of local activity and citizen activity leaders and animators)





Preparatory support (capacity-building, training, networking) with a view to preparing and implementing local development strategy (LDS) for LAGs in towns and cities with +20 thousand citizens

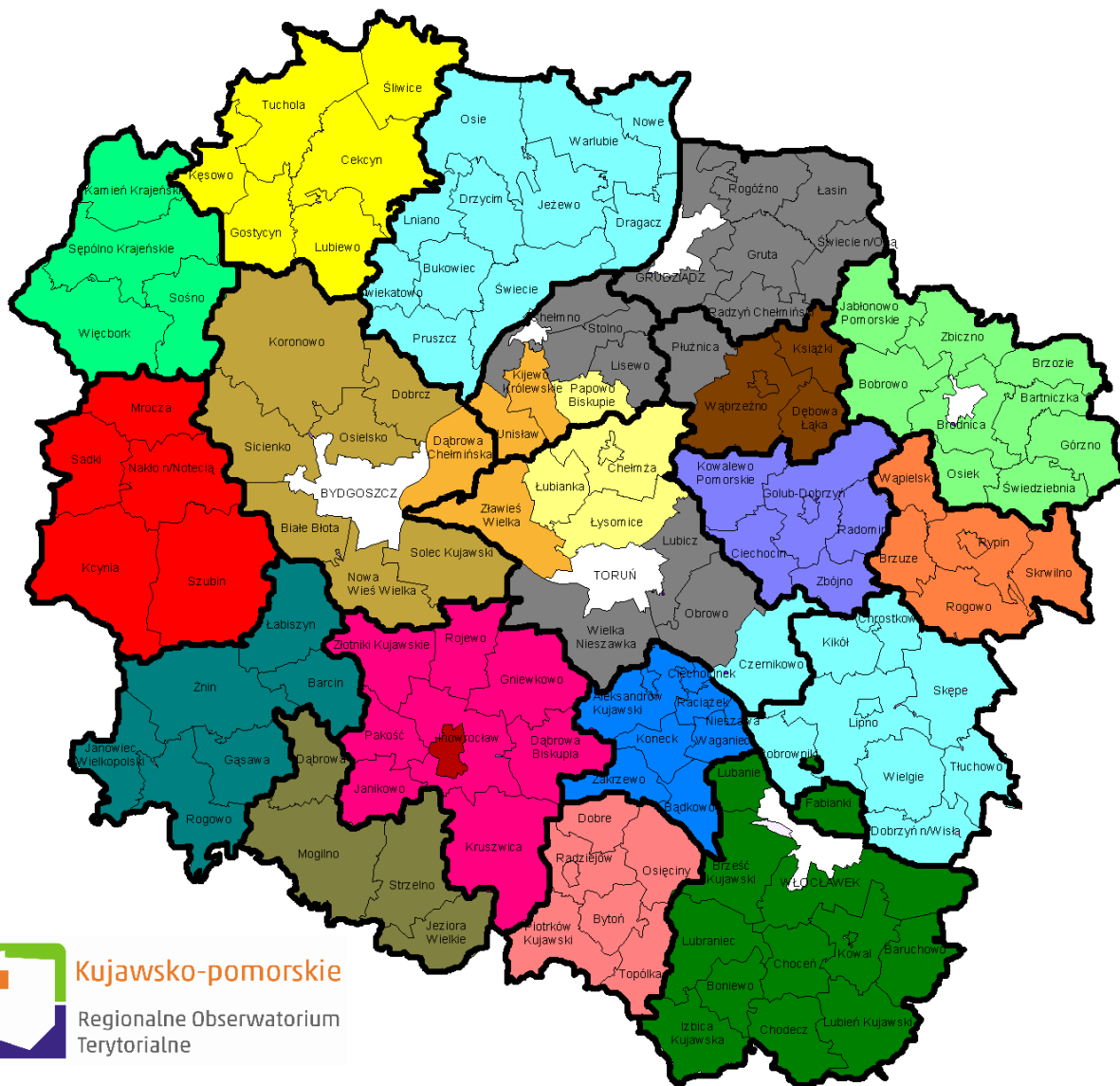


Additional operations



**Running costs (operating costs,
personnel, training etc.) and
animation**





Kujawsko-pomorskie

Regionalne Obserwatorium
Terytorialne

- Stowarzyszenie "Partnerstwo dla Ziemi Kujawskiej"
- LGD Pojezierze Brodnickie
- LGD "Trzy Doliny"
- Stowarzyszenie "Vistula Terra Culmensis - Rozwój przez T"
- LGD "Zakole Dolnej Wisły"
- Stowarzyszenie LGD "Dolina Drwęcy"
- LGD "Czarnoziem na soli"
- Stowarzyszenie LGD Gmin Dobrzyńskich Regionu Południ
- LGD "Sąsiedzi wokół Szlaku Piastowskiego"
- Stowarzyszenie "Partnerstwo dla Krajny i Pałuki"
- LGD "Razem dla Powiatu Radziejowskiego"
- Stowarzyszenie LGD Gmin Dobrzyńskich Regionu Północ
- Stowarzyszenie "Nasza Krajna"
- LGD "Gminy Powiatu Świeckiego"
- LGD "Ziemia Gótyku"
- Stowarzyszenie LGD "Podgórze Toruńskie"
- LGD "Bory Tucholskie"
- LGD "Wieczno"
- Stowarzyszenie LGD Dorzecza Zgłowiączki
- LGD "Pałuki wspólna sprawa"
- Stowarzyszenie LGD Inowrodaw
- granica powiatów

Budget



**36,5 millions € (almost 7% of all
ESF budget in our ROP)**





Co-financing rate – 85% (present state)

Our target - 95% (after technical adjustment of ROP)



Why?



**We believe that CLLD approach
will allow local communities to
initiate and implement
development measures in a
participative way.**



Why?



CLLD will contribute to increasing the level of social capital – increased social participation or widely understood civic activity.



Why?



It's a better way to confront social challenges when the means, the actions and the actors are widely accepted. And the ones we're helping are a part of the process at all stages of it.





Thank you!

Michał Heller

m.heller@kujawsko-pomorskie.pl

