

The selection process for Axis 4 projects in France

FARNET Brussels
26 - 27 January 2011

Laurence SERRANO

Ministry of agriculture, food, fisheries, and rural and territorial development



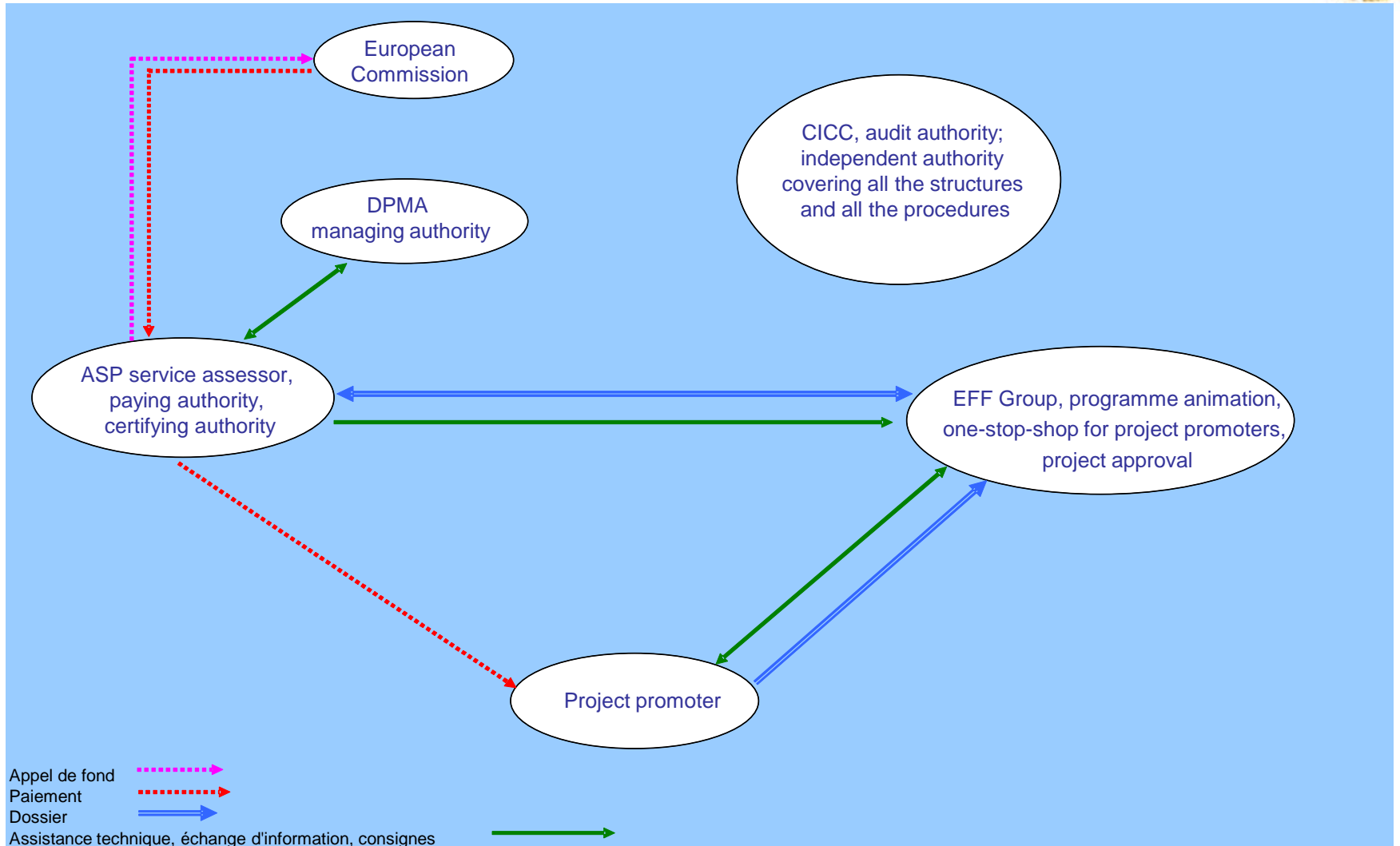
Axis 4 implementation bodies

Three bodies participate in the implementation of Axis 4 of the European Fisheries Fund (EFF):

- The managing authority for Axis 4 of the EFF: the Directorate for maritime Fisheries and Aquaculture (Ministry for Agriculture, Food and Fisheries)
- The certifying authority and the paying authority for the EFF: the services and payments agency (ASP)
- The EFF group: a support structure with its own legal identity.

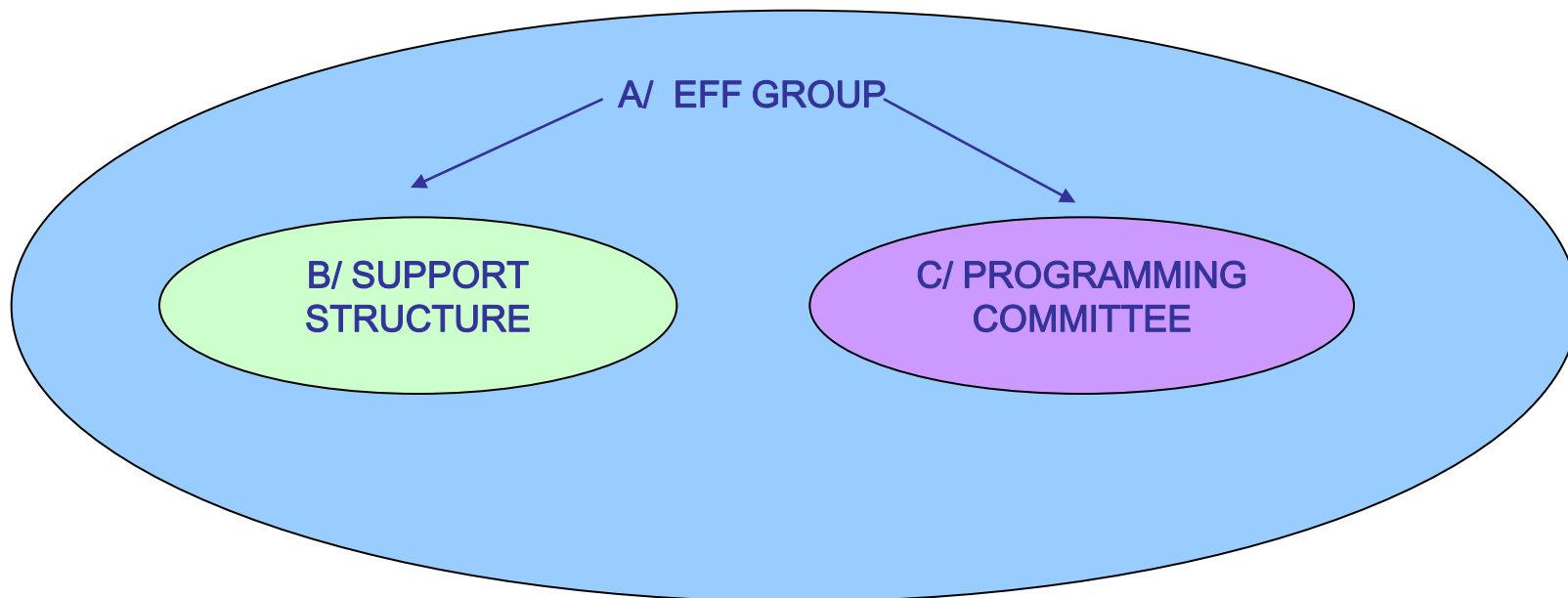


The implementation process

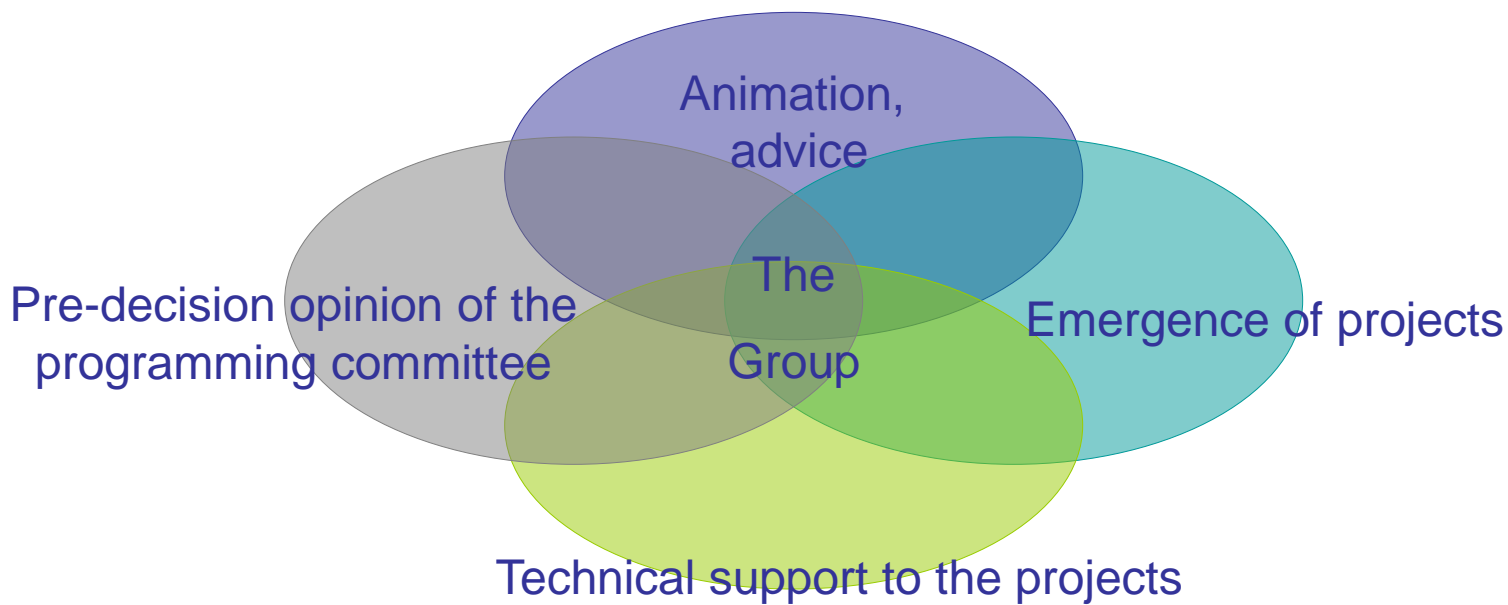


The process

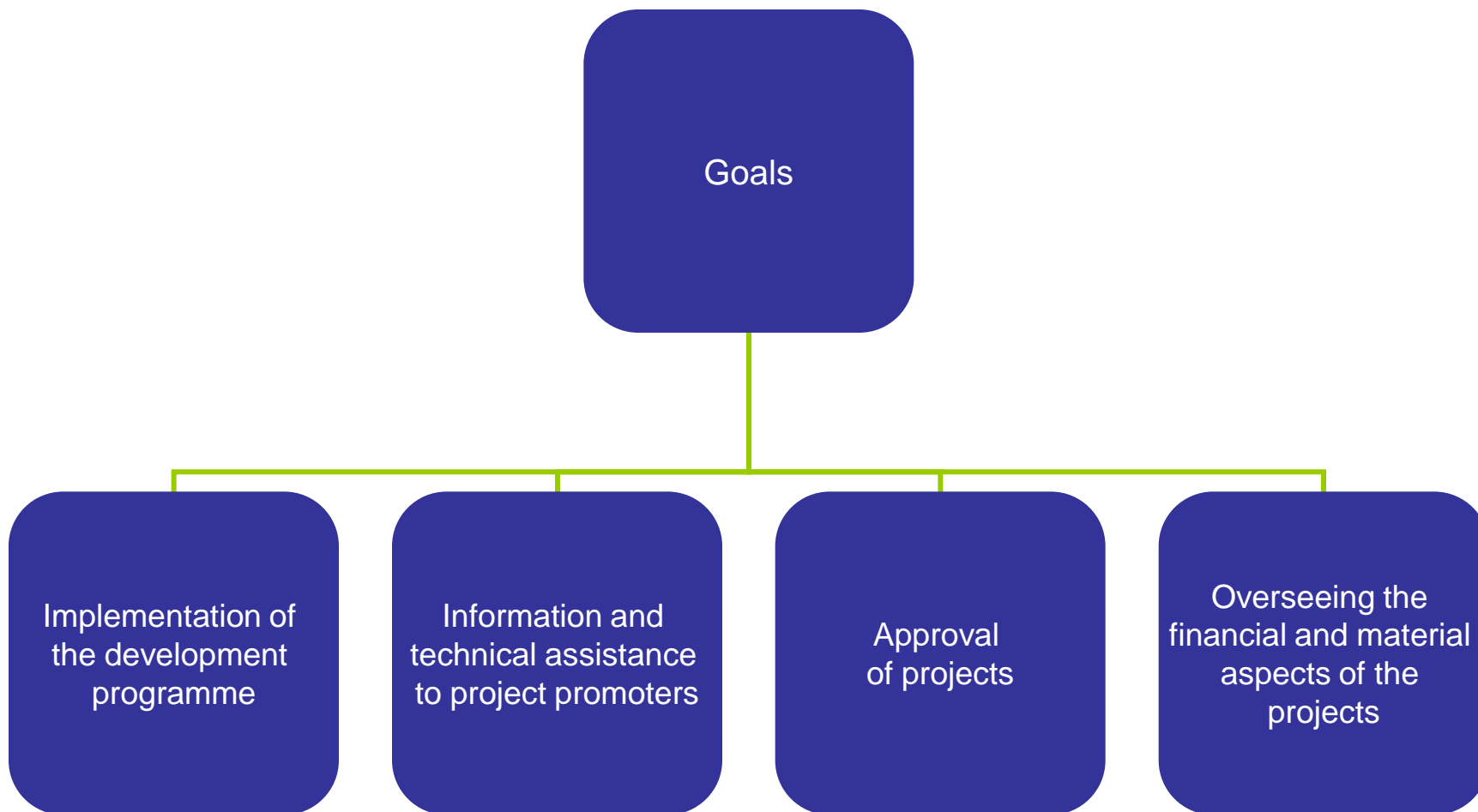
- The EFF group is established as a sectoral/private partnership, with a minimum of 50% of the members coming from the fisheries and aquaculture sectors and 50% from the private sector.



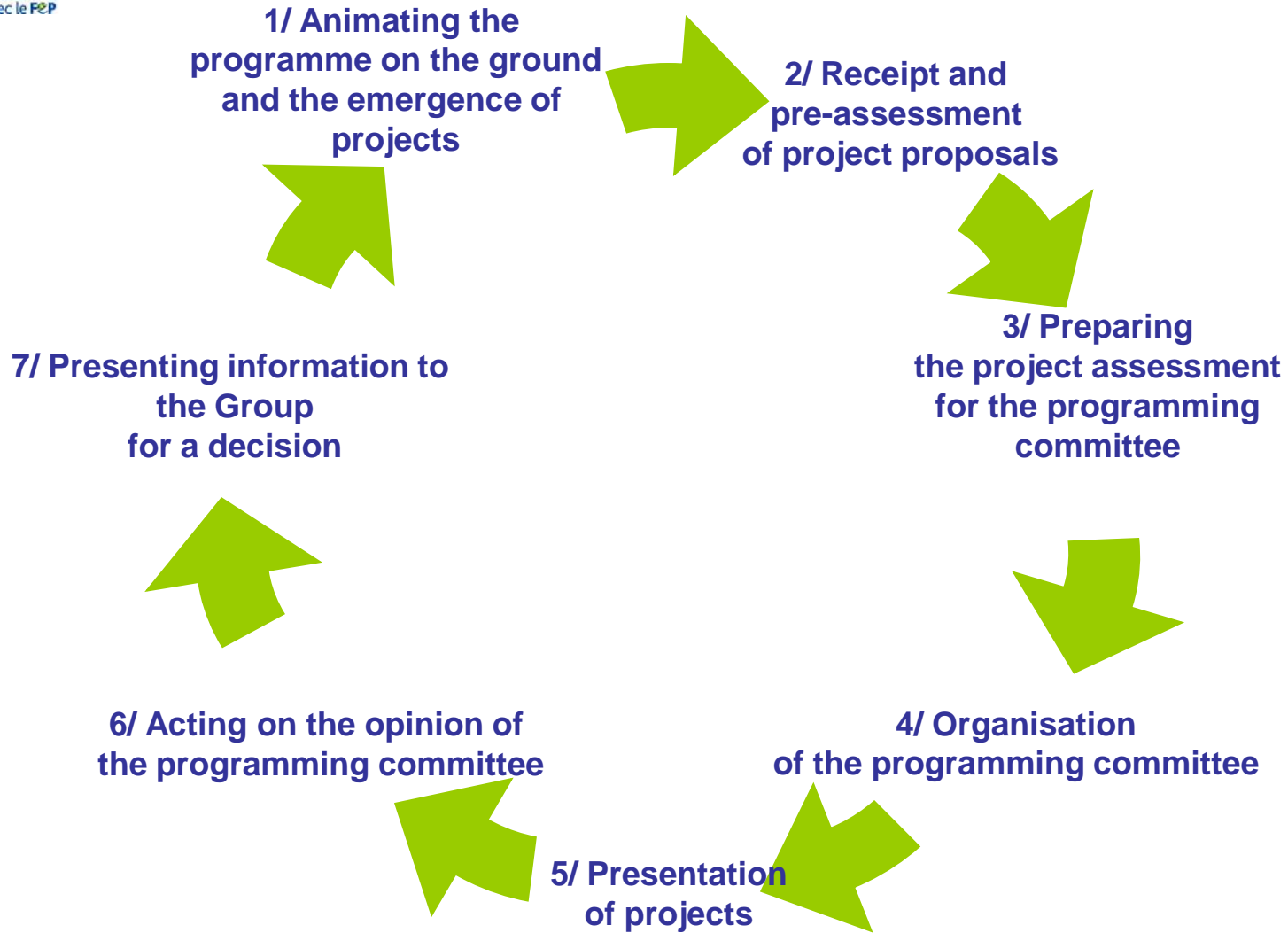
AI/ The Group



B/ The support structure



Tasks



C/ The programming committee



Its role

The internal rules of procedure specify the responsibilities of the programming committee

→ agree

→ defer

→ refuse

projects

Only files that are complete and fully prepared are presented to the programming committee

The members are informed during meetings of :

- operations terminated or deferred during the pre-assessment phase;
- operations terminated or deferred during the assessment phase;
- allocation agreements signed with the beneficiaries.



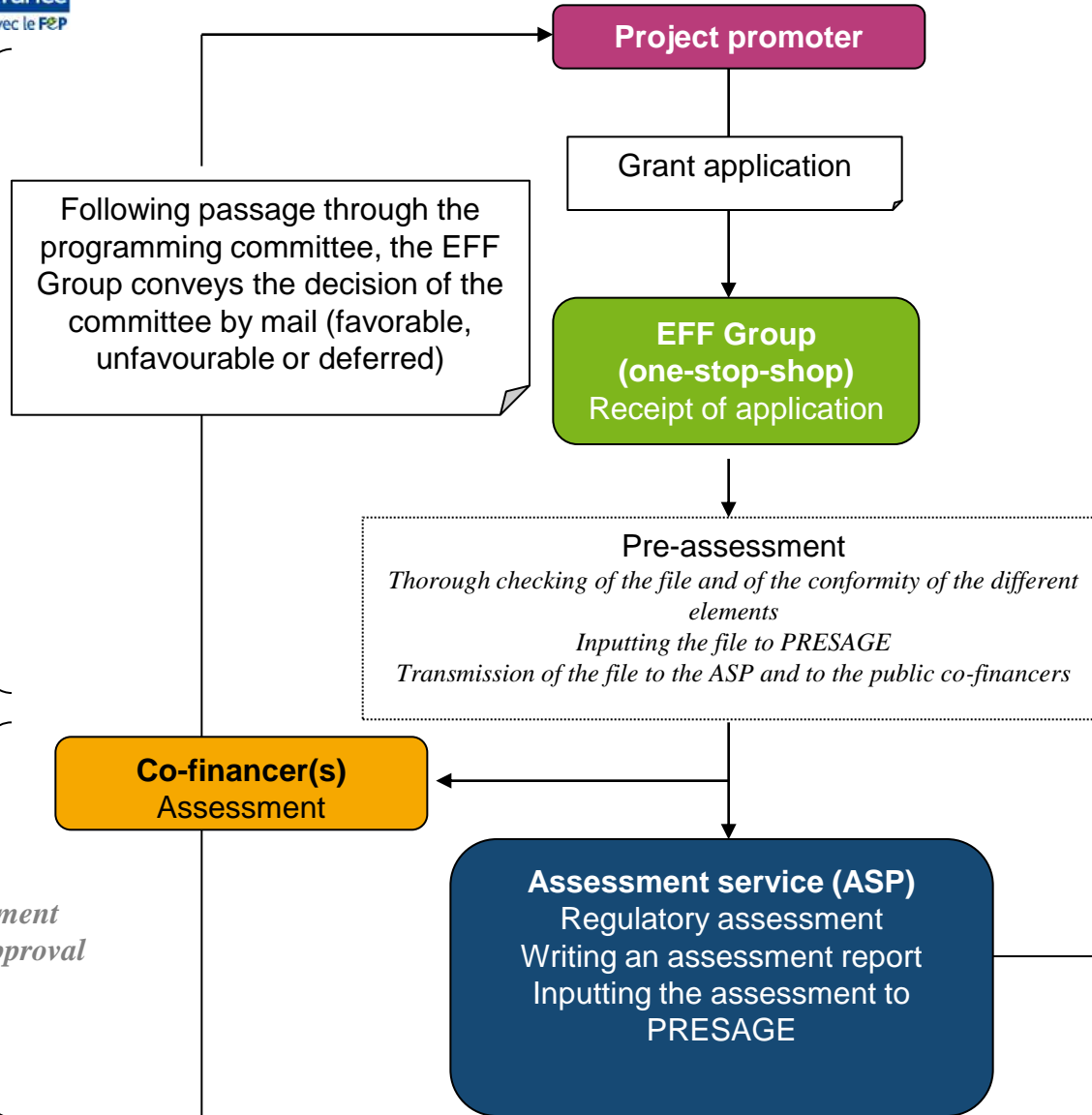
Managing Axis 4 projects: pre-assessment

S
U
B
M
I
S
S
I
O
N

o
f

F
I
L
E

*Assessment
before approval*



During the assessment, the ASP can request complementary material. In such cases, a request for the additional material is addressed to the project promoter by a representative of the EFF Group.



Project pre-assessment

At this stage, the support structure verifies the relevance to the strategy as well as the appropriateness of the project to the territory.

Verification of conformity with the development plan and the group's strategy.

This also includes checking :

- the capacity of the beneficiary to carry out the project (technical and financial),
- the contribution of the co-financers,
- the local impact of the project.

Similarly, the support structure must also carry out a quantitative evaluation of the project.

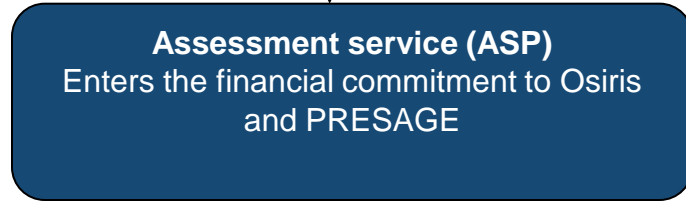
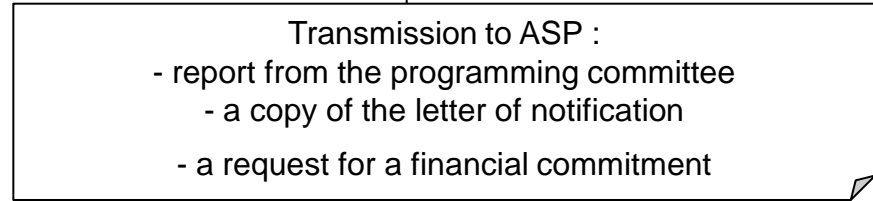
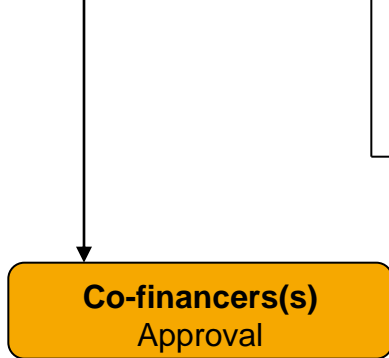
If it discovers a conflict between the project and the strategy of the group, the project promoter must be informed of the inadmissibility of the application beyond the pre-assessment stage.



Managing Axis 4 projects: the programming committee

A
P
P
R
O
V
A
L

A
G
R
E
E
M
E
N
T



The opinion of the programming committee

After deliberation, the programming committee gives its opinion on all the projects it has received.

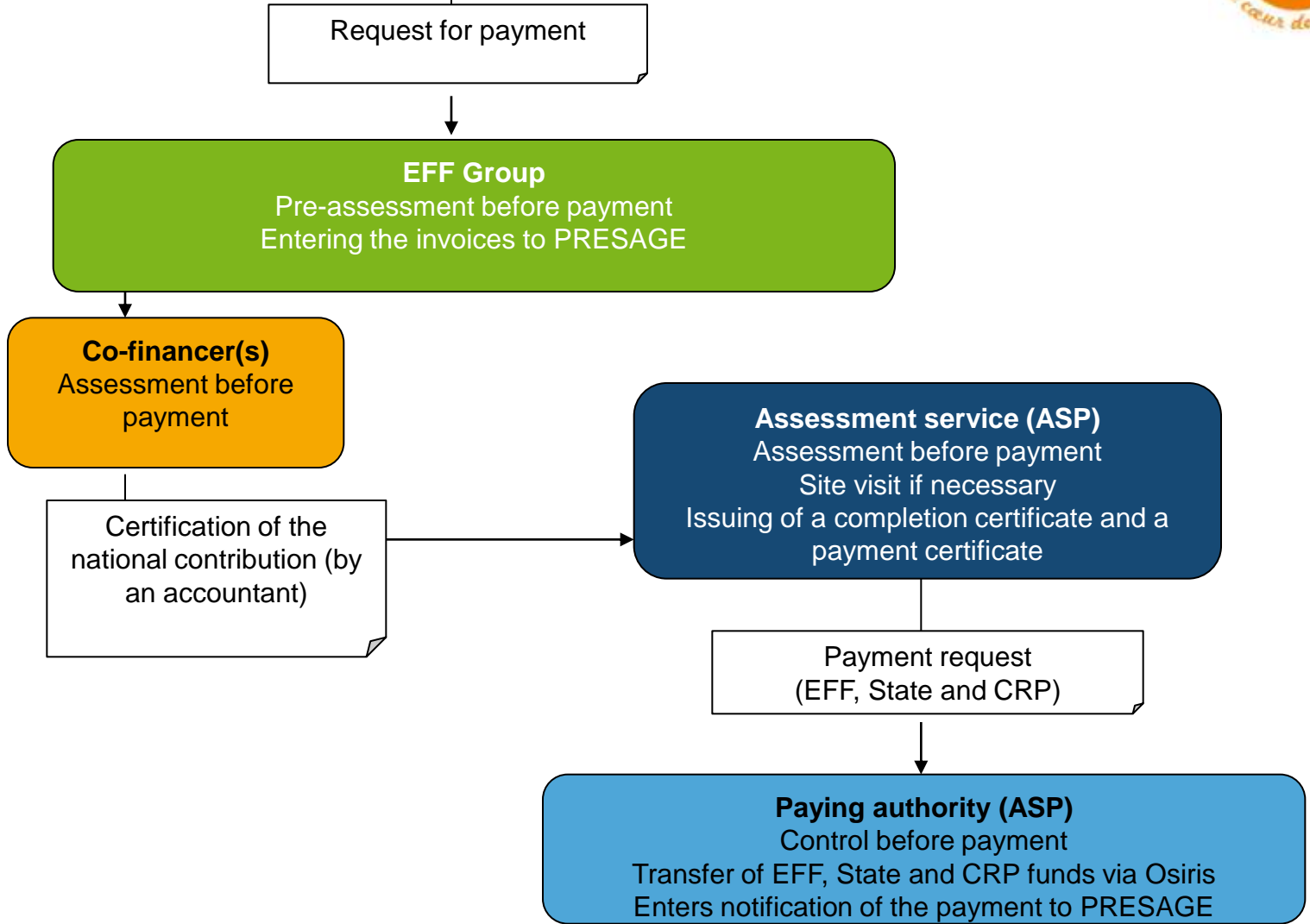
The opinions of the programming committee are recorded in a report addressed to all of the members of the committee. Annexed to this report are the assessment notes for each project.

The opinions are transmitted to the group, which makes the final decision.



Managing Axis 4 projects: payment

**ASSESSMENT
before
payment**



**P
A
Y
M
E
N
T**



The legal agreement of the project

- The legal agreement is a specific decision associated with the granting of financial aid and **takes the form of a grant agreement** signed by the recipient and the support structure of the EFF Group.
- The agreement is drawn up by the regional delegation of the ASP, taking account of the assessment report sent to it by the Group and signed by the president of the programming committee, or the report of the programming committee.
- The agreement defines the conditions of payment of EFF and State aid for the implementation of the project. Only one agreement is required for these two sources of aid.
- The agreement must be written in accordance with standard documents, but adaptations are always possible in order to take account of possible specificities related to the project.



Payment request by the beneficiary

- The payment of EFF and State aid can be made several times during the lifetime of the project. It can be proposed to the recipient as: instalments and the balance. The method of payment must be expressly indicated in the contract agreement.
- The EFF Group checks that the request for payment file is complete.
- If it is complete, it transmits the request for payment file to the regional delegation of the ASP to carry out the check that the work has been done.

